



Encore
Theatre Company

SHOWBUZZ

DECEMBER 2013

PHANTASTIC START

INSIDE THIS ISSUE:

PHANTASTIC START ♦ P.1

KNOWING THE SCORE ♦ P.2

FRESH IN 2014 ♦ P.3

WHAT'S ON ♦ P.4

Within 14 hours of the final curtain falling on Encore's highly successful production of *Annie*, some dedicated members of team were dismantling the set and organising the costumes into piles for cleaning.

At the same time another group assembled... the *Phantom* cast had their first full day of rehearsals. With plenty of advance work put in by the Musical Directors and Soloists, the process of staging the show has begun in earnest. The energy and enthusiasm already brought to the task will see Act 1 completed by the time they take their well-earned Christmas-break.



14-29 March Princess Theatre

Creativity

Innovation

Excellence

Enquiries

Jamie Hillard
0433 999 248

Belinda King
0411 233 345



PO Box 951 LAUNCESTON 7250
ABN: 78 571 056 515
encoretheatre@hotmail.com

encoretheatre.org.au

ETC's Presentation Partners



ETC's Awards



Seeing is
Believing
in 2013

KNOWING THE SCORE

Requiring the biggest orchestra yet assembled for an Encore production, Musical Directors Matt Dudfield & Susie Heggie have an enormous task ahead to recreate the renowned score that has dominated Broadway and London's West End for almost three decades.

The orchestra had their first good look at the score in late November, and will next meet up with the cast in mid-December for a pre-Christmas session ahead of the festive season break in rehearsals.

March 14-29 Princess Theatre

TICKETS 6323 3666 theatrenorth.com.au

Picture: Musical Directors Matt Dudfield (Conducting) & Susie Heggie (on Keyboard) take the Phantom Orchestra through the score



The Phantom
of the Opera
Princess Theatre
March 2014

encoretheatre.org.au

PHANTOM

ETC's Major Partners



Seeing is
Believing
in 2013

The Phantom
of the Opera
Princess Theatre
March 2014

encoretheatre.org.au

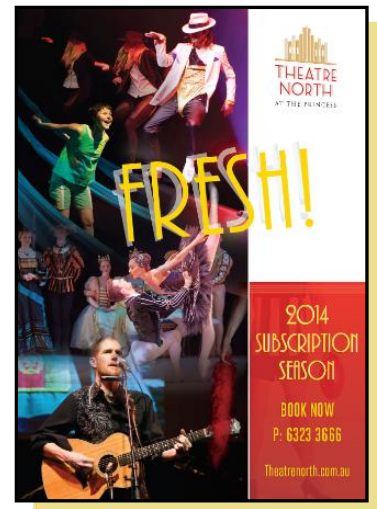
THEATRE NORTH at THE PRINCESS!

It's FRESH! Introducing the new look THEATRE NORTH AT THE PRINCESS! Theatre North at the Princess has a brand new look and big plans for 2014, including a bumper subscription season boasting 15 productions on sale now!

- **The benefits of becoming a subscriber** are now even bigger, with access to the best seats during the priority booking period (from now until 24 December) and exclusive savings of up to 20%.
- **Friends Subscribers** get an additional ticket discount! It's just one of the many benefits of becoming a **Friend of Theatre North @ The Princess**. With almost 200 Friends already, join the fun and sign up at the Box Office.
- **Design your own subscription package** – you can choose as many or as few shows as you wish. And you only have to subscribe to a minimum of two shows to get all the benefits!
- **Visit the new look Theatre North at the Princess [website](#)** for details of all the shows in the 2014 season, pick up a **Fresh! Subscription Season brochure** at the Box Office or phone 6323 3666. The staff will be happy to help you design your subscription package and to answer any questions you may have.
- **New in 2014: Student Subscriptions!** A new and exciting Student Subscription option is available to full time students of all ages. By subscribing to at least two selected shows in the season, students can enjoy fantastic theatre experiences for **just \$15 per ticket!** So, if you're subscribing in 2014, sign the kids up too! If you're a student, grab the chance to see top class opera, dance, music and drama all for \$15 per ticket!
- **New in 2014:** Exhibitions, guided venue tours, pre-order your interval drinks, reciprocal Subscriber ticket discounts with Burnie Arts & Function Centre and more!

Subscribe now and win! Submit your subscription form to the Box Office by close of business on **Friday 6 December** for your chance to win! You could be one of five 2014 subscribers who will receive a refund for two tickets, one for each of two of your selected shows (other than *Admission: One Shilling*, *The Grigoryan Brothers* and *The Dancers Company*). Winners drawn on 11 December 2013.

Become a subscriber and have the best of times in 2014 with Theatre North at The Princess!



WHAT'S ON in TASSIE?

12 Dec **Carols by Candlelight** presented by Rotary Club of Tamar Sunrise (City Park)

20-22 Dec **Cinderella - A Christmas Pantomime** presented by Stephen Beckett Prod. (Earl Arts Centre)

FRESH! 2014 Theatre North Subscription Season presented by Theatre North

14-29 March 2014 **The Phantom of the Opera** presented by Encore Theatre Co (Princess Theatre)

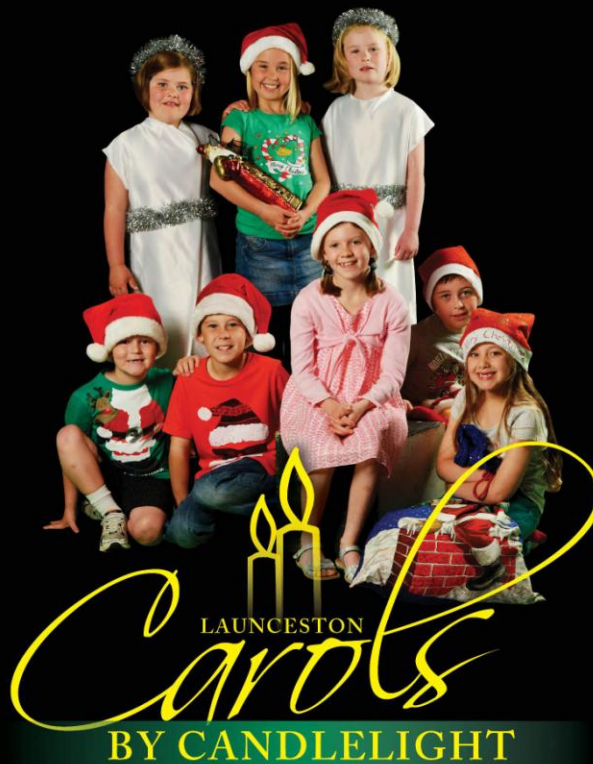
BOOKINGS

IN PERSON Princess Theatre Box Office, 57 Brisbane Street
ONLINE: theatrenorth.com.au **PHONE:** 6323 3666



This Christmas give the gift of live theatre!

Presented by the Rotary Club of Tamar Sunrise and Vos Construction | Rotary  



Sunday, 15 December at 7.00pm - City Park

ADULTS \$5, CHILDREN \$2
strictly an alcohol and smoke free family event



Wishing you a
very Merry
Christmas &
relaxed and
safe New Year

With best wishes from

Jamie, Wendy,
BJ, Ross, Leroy,
Di, Paul, Annie
& James



Encore Theatre Company COMMITTEE

ETC's Partners

